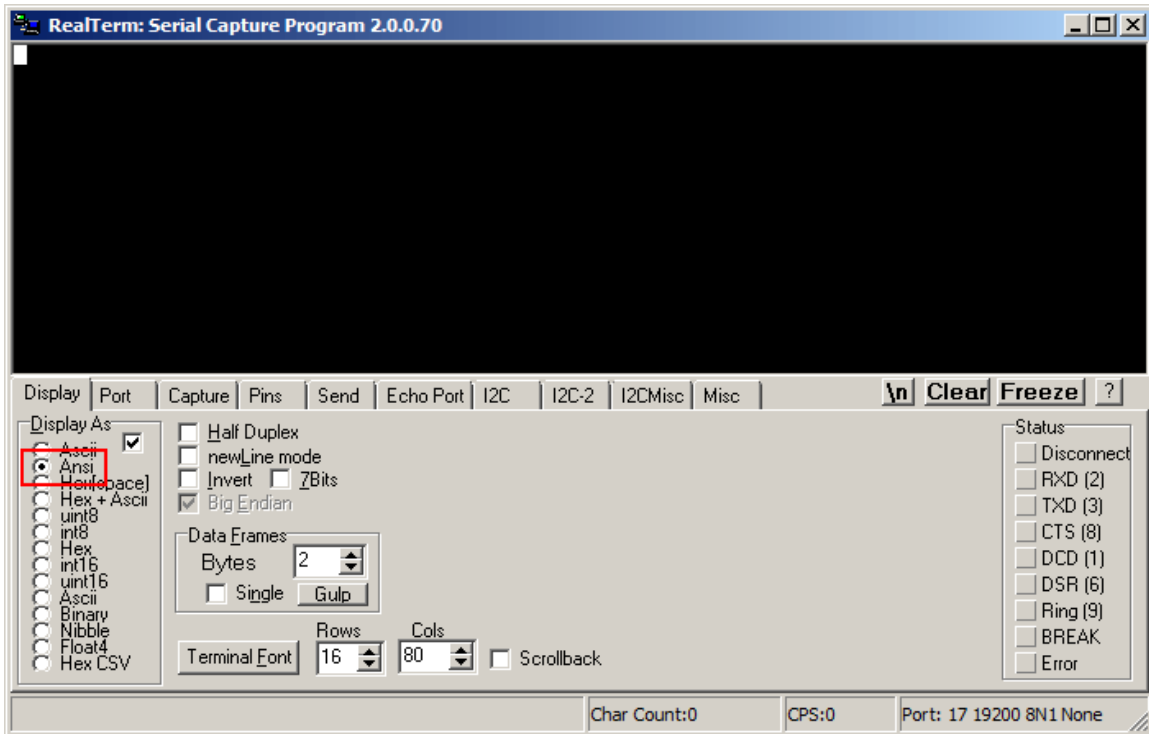
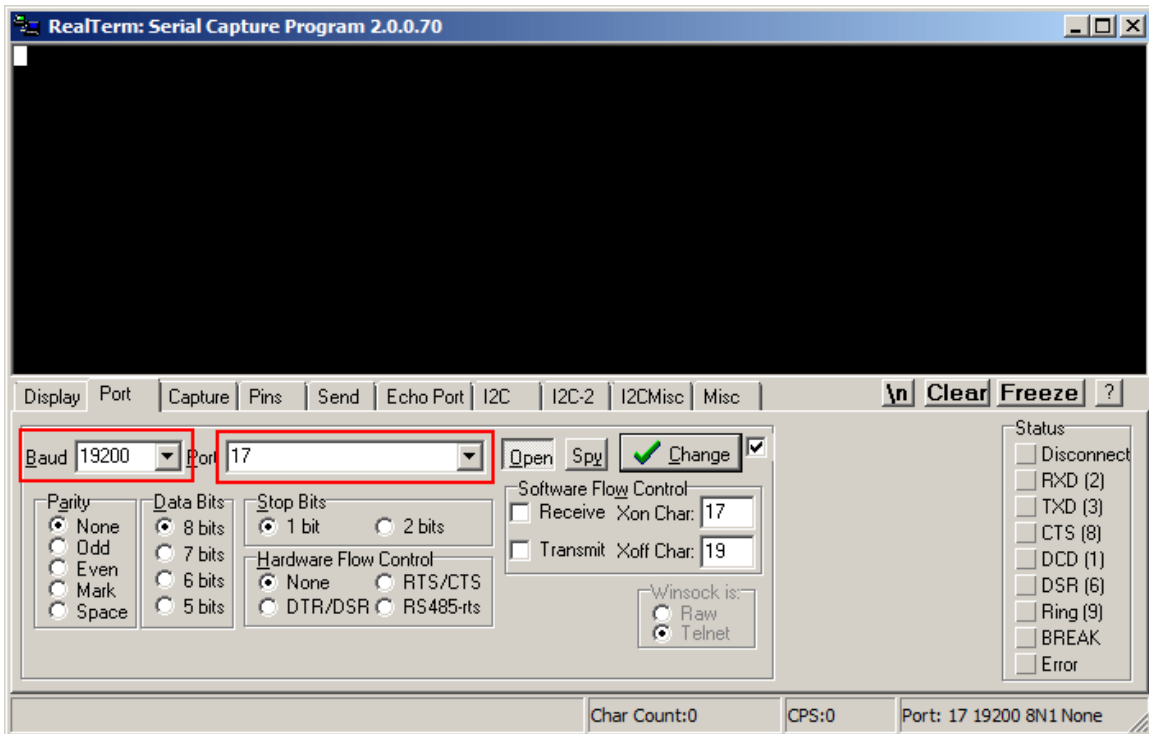


Step 1: Open the program and you will see the window below. Make sure to check the radio button next to "Ansi."



Step 2: Click the "Port" tab and set the Baud rate to 19200. The Port # will vary.



Step 3: After setting up the Baud and Port, click on the “Open” button twice. The first click will close the port and the second click will set the port to the setting specified in Step 2. The change should be reflected at the bottom right corner of RealTerm.

